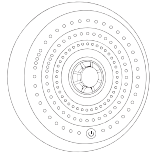


Vape Detector

Model: AJ-660
AJ-661



! IMPORTANT!

For related operations, please read and keep this manual carefully.

This manual contains important information on the operation of Vape Alarm. If you install an e-cigarette detection alarm for someone else, be sure to leave this manual or a copy of it with the end user. Vape Alarms are often able to quickly and effectively detect e-cigarette particles in the environment. When these particles enter the human body, they will cause serious harm to the human respiratory system for a long time! If you want to stay away from the effects of e-cigarette particles on your body in the environment, you need to install such an Vape Alarm. This device is designed to protect individuals from the acute effects of exposure to e-cigarette particles. But it will not fully cover individuals with certain medical conditions. If in doubt, consult your doctor.

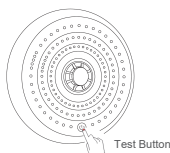
PRECAUTIONS

Name	Quantity
Vape Detector	1
Power plug	1
Screw bag	1
User manual	1

Parameter description

Size	φ117*H46mm
Net weight	0.24kg
Shell material	ABS
Fire-proof level	V-0
Alarm indication	LED + Buzzer
Networking mode	TUYA WIFI
Sound intensity	>85dB@3m
Working condition	-10 C ~ +50 C, ≤80% (no condensation)
Life span	>5 Years
Power supply	External power plug 100-240V to DC5V
Backup power standby working hours	2 to 5 hours

Function description:



Boot preheating	The green indicator light flashes once and enters the 120-second countdown. The red indicator light flashes once per second. After the warm-up is over, the device enters the normal working state.
The external power supply is not connected, and the battery is detected to be low when the power is turned on	The yellow light is always on for 1 second, and then enters sleep mode (connect to an external power supply to charge and restart)
Test Button	Short press the button, the green and yellow indicators light up in turn. The red indicator light flashes 4 times quickly, and at the same time it emits an analog alarm sound "beep", "beep", "beep", "beep".
Alarm	The sound is greater than 85dB 3 meters away. The red indicator light flashes 4 times quickly, and at the same time it emits an analog alarm sound "beep", "beep", "beep", "beep". 3 second silent period.
Mute	In the alarm state, short press the button. The red indicator light flashes and the sound stops until 10 minutes later. According to the concentration situation, return to normal or unmute and continue to alarm. If the concentration decreases during the silence period, it will exit the silence and enter the normal detection state.
Fault	When the sensor is faulty, it emits two beeps every minute, accompanied by two yellow lights, until the fault is rectified.
Low battery	When the built-in backup battery is at low voltage, it emits a beep every 1 minute and blinks yellow once until it is connected to the external main power supply. If the external power supply is not connected for a long time, the standby battery is exhausted, and the device automatically shuts down. (Connect to the external power supply to charge and restart).
Normal	Connect the external power supply: 1. Charge the spare battery, and the green indicator light will flash once every 5 seconds. 2. The green indicator light is always on when fully charged. External power removed: The green light flashes every 60 seconds.
Mains Power OFF	After the main power supply is removed, the buzzer buzzes for four times and the yellow light blinks for four times. At the same time, the APP prompts to remove the main power supply.
APP alarm sensitivity adjustment	After the Vape detector is successfully connected to the APP, You can set the alarm sensitivity through the mobile APP. Every time the APP changes the sensitivity successfully, the device emits a sound. Sensitivity from high to low: 100% 1 beep, 75% 2 beeps, 50% 3 beeps, 25% 4 beeps, 0% 5 beeps.(Blackout memory)
Tamper Function	After the preheating of the boot (120S), the anti-demolition and explosion-proof functions will be automatically turned on. Once there is a relatively intense shaking

	and tapping action, a "drop" and a red light flash are issued every 2 seconds for 10 seconds.
--	---

Select the configuration according to the model:

Model	Optional function
AJ-660	Temperature and humidity, APP can view.
AJ-661	Noise, speech detection. The noise detection function will be turned on automatically after the startup preheating (120S). The device detects that the ambient sound is consistent with the built-in common speech, and the red light flashes every 500ms for 10 seconds. APP message alert.

How to connect to a WIFI network and connect to the App

- Please go to the mobile APP market to download the Tuya Smart App.
- Connect the App to your WiFi
- Press the test button on the Vape Detector for at least 5 seconds until the green light flashes quickly, then release to enter the network pairing mode. Press the (+) (Top right corner) in the app to add a new device.
- Enter your WiFi password and follow the steps recommended by the App.
- The time limit is 2 minutes before the Vape Detector will automatically exit the pairing mode.

If Successful	The green indicator light will light up for 2 seconds
If timeout or failure	The red indicator light will light up for 2 seconds and then Exit

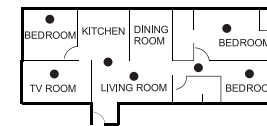
1. How to select the installation location.

Vape Alarms are suitable for installation in places where smoking is prohibited. For example, the living room, the room, the public restroom, the place where the children play and so on.

! WARNING

Select the installation location and install it by qualified personnel.

Single Story
more than one sleeping areas

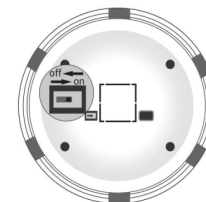


2. Installation precautions

Vape detectors detect particles in the ambient air to identify vape particles. Therefore, it should be installed away from places where PM2.5 particles in the atmosphere are seriously polluted.

The installation of this equipment should not replace the proper installation, use and maintenance of fuel appliances, including proper ventilation and exhaust systems.

Note: Please turn ON the power switch to ON and connect to the main power supply. As the picture shows:

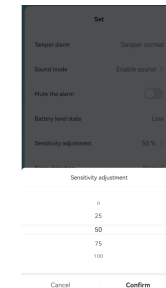


2.1 Ideally, each room should be installed with an Vape Alarm, which can effectively detect the exposure of Vape Alarm particles, and do a good job of window ventilation in advance. If there is more than one burner in the room and it is prone to smoke particles, we cannot install the detector in this position.

3. The following points should be noted when installing Vape Alarm indoors:

- Vape detectors should not be installed in places where particles are easy to produce, such as kitchens and places where furnaces are burning for heating.
- B: The vape detector can not be wall-hung or tilted installation should be flat installed on the ceiling.
- C: Do not block or block the detector ventilation inlet.
- D: Please ensure that the installation is on the ceiling 2-4 meters above the ground.
- E: Operating temperature range : -10 ~ 50 ° C, humidity range : 30 ~ 80%rh. Do not install the device in a low-temperature, high-temperature, dry, or humid place.
- F: Do not install the device in a place that may affect its short-term or long-term reliability. Some common substances, vapors, or gases can affect the measurement accuracy of the equipment and even cause damage. For example, the installation should avoid cleaning fluid, polish, paint, cooking, and other environments.
- G: If there is mild PM2.5 pollution in the environment, you can set the alarm sensitivity through the APP. Turn the sensitivity down.

To reduce the likelihood of false alarms from your vape detectors, check the installation location and consider adjusting the sensitivity level from the connected app. Vape detectors are typically installed in closed windows and airtight areas, which can accumulate dust and trigger a false alarm. Adjusting the sensitivity based on the installation environment and location can help mitigate this issue. For example, select the lowest sensitivity for detectors in the basement, a medium sensitivity for home use, and the highest sensitivity for areas with significant airflow from exhaust fans.



4. Maintenance and cleaning The unit is designed to be as maintenance-free as possible, but there are a few simple things you must do to make it work properly.

- 4.1** Press the test button of the Vape Alarm detector at least once a week to ensure that the sound and light alarm of the device is normal.
- 4.2** Clean the Vape Alarm detector at least once a week by gently vacuuming around the shell with the soft brush attachment of the household vacuum cleaner. Do not use water, cleaning agents or solvents to avoid damage to the equipment.
- 4.3** If the Vape Alarm detector is affected by too much dust or dirt, replace the device immediately.
- 4.4** When the sensor is damaged, the yellow LED light flashes twice every 60 seconds and emits two beeps at the same time to indicate the device fault. If the alarm does not return to normal operation for a long time, replace the detector.
- 4.5** The maximum service life of the equipment is 5 years from the factory date. Replace the detector when it expires.

5. Warranty statement

Warranty Period We assure the original consumer that in the use and service of each new alarm, there will be no defects in materials and workmanship for a period of time from the date of purchase.

This warranty does not cover damage caused by accident, misuse, misuse or reasonable maintenance. This warranty supersedes all other express warranties, obligations or liabilities. All implied warranties, including but not limited to warranties of merchantability or fitness for a particular purpose, are valid for two years from the date of purchase of the detector. Copyright Notice: The copyright of this manual belongs to the manufacturer. All rights reserved. Except as permitted by the Copyright Law, no one may reproduce, adapt or translate without permission. Warranty: The contents of this manual are subject to change without notice. Please contact the manufacturer for the latest information. The manufacturer is not responsible for damages caused by errors in this manual, nor for damages resulting from the provision or use of this manual.