

**VIMPEX**



IDENTIFIRE 

IDENTIFIRE | **PRO**   
THE FIRST OF A GENERATION



THE FIRST OF A GENERATION



MADE IN  
THE UK

# Identifire Pro represents the market's broadest selection of electronic sounders and visual alarm notification devices.

The first new series of notification devices in a generation. Identifire Pro provides fire, security and building alarm system installers and integrators over 200 variants of **EN 54**, **ISO\***, **AUS** and **Marine\*** approved Sounders, VADs and VIDs – all with five different mounting options, all with a common form factor and with fast, simple and familiar installation methods.



Identifire Pro represents a huge range of fully approved products:

- 32 Tone Sounder
- Sounder VIDs (Visual Indicating Devices)
- Wall Sounder VADs (Visual Alarm Devices)
- Ceiling Sounder VADs
- Wall VADs
- Ceiling VADs
- Wall VIDs

# Identifire Pro is a truly global product.



Designed and manufactured by VimpeX in our factory in Essex, UK and available within the EU direct from our subsidiary - VimpeX Europe, Identifire Pro is a truly global product.

Approved to **EN54-3**, **EN54-23**, **ISO7240-3\*** and **ISO7240-23\*** by UL as well as **AS7240-3** and **AS7240-23** with 9 approved tones including all major European fire signals.

With Marine\* certification too, whether on land or sea, Identifire Pro signalling devices offer extreme flexibility for the widest variety of applications.

## International Approvals

### EN54-3

Fire detection and fire alarm systems - Fire alarm devices. Sounders

### EN54-23

Fire detection and fire alarm systems - Fire alarm devices. Visual alarm devices

### ISO7240-3

Fire detection and alarm systems - Audible alarm devices

### ISO7240-23

Fire detection and alarm systems - Visual alarm devices

### AS7240-3

Fire detection and alarm systems - Audible alarm devices

### AS7240-23

Fire detection and alarm systems - Visual alarm devices

### Marine

Marine Equipment Directive (MED) Approval

\*Marine and ISO approval due July 2025

## Approved Tones

### ✓ Identifire Pro Slow

800 Hz to 970 Hz Swept at 1 Hz

### ✓ Identifire Pro Medium

800 Hz to 970 Hz, Swept at 3 Hz

### ✓ Identifire Pro Fast

800 Hz to 970 Hz, Swept at 9 Hz

### ✓ German DIN Tone

1200 Hz falling to 500 Hz over 1 sec, silence 10mS

### ✓ French Fire Sounder (AFNOR)

554 Hz for 100mS and 440 Hz for 400mS

### ✓ Swedish Tone (Fire)

Intermittent 660 Hz 150mS on, 150mS off

### ✓ Dutch Slow Whoop

500 Hz rising to 1200 Hz over 3.5s, silence 0.5s (dutch)

### ✓ Italian Tone

970 Hz continuous

### ✓ ISO8201 LF Marine

Intermittent 970Hz 500mS on, 500mS off



## A new member of the Identifire family

Pro AV devices are just one part of the ever-growing family of Identifire fire, security and building system alarm products.

Identifire components now cover the majority of fire and security system accessory needs – all in the same modern form factor and design.

Along with Mini Power Supplies, Relays, Connection Boxes, Remote Lamps, Buzzers and Beacons, Pro now adds high-end premium alarm products to the Identifire lineup.



IDENTIFIRE 

- Tritone Sounder
- Multitone Base Sounder
- Tritone With VID (Visual Indicating Device)
- VID (Visual Indicating Device)
- Remote Lamp & Buzzer Units
- Auxiliary Relays
- Connection Boxes
- Mini Power Supply

IDENTIFIRE | **PRO** 

- 32 Tone Sounder
- Sounder VIDs (Visual Indicating Devices)
- Wall Sounder VADs (Visual Alarm Devices)
- Ceiling Sounder VADs
- Wall VADs
- Ceiling VADs
- VID (Visual Indicating Device)



## Easy installation for all situations

Pro builds on the fundamentals of the basic Identifire design by offering no fewer than five easy to install mounting options:

### Flush Mount



Designed for a slimline and architecturally attractive option.

### Pattern Mount



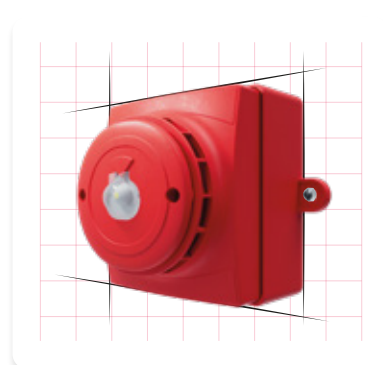
Our standard base with a low profile and low impact look.

### Surface Mount



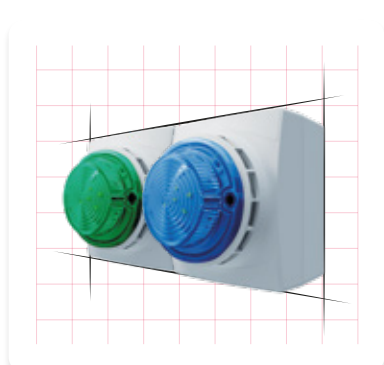
Perfect for surface wiring and glanded entry.

### Weatherproof



True IP65 weatherproof enclosure for external and aggressive environments.

### Double Backbox



For an inexhaustible number of alarm, flasher and strobe combinations.

“

A mounting method for every application. Dedicated weatherproof back boxes are particularly important for system integrity.

”



# All Identifire Pro products share the same key features

- Approved to EN, ISO\*, AUS and Marine\* approvals
- Five different mounting options
- Purpose-designed weatherproof backbox to true IP65 rating
- Housings in red, white or grey
- Common form and familiar installation methods
- Full compatibility with entire Identifire range
- Customisable via pad printing

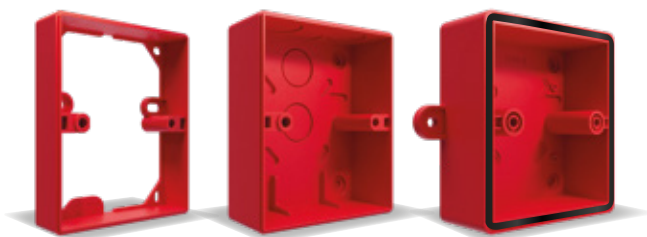
\*Marine and ISO approval due July 2025

## Multiple Mounting Options

Pattress

Surface

Weatherproof  
(IP65)



## Lens Colours

Available VID Lens Colours



Available VAD Lens Colours



## Housing Colours



## Pad Printing, Branding & Customisation





# Identifire Pro Product Range

---

SOUNDERS / VADS / VIDS







## Identifire Pro Sounder

EN, ISO, AUS and Marine approved 32 tone sounder for fire, security and general signalling. 9 approved tones delivers ultimate versatility.

Data Sheet



- Maximum sound output 110 dB(A)
- 32 user-selectable tones
- 9 'approved' tones
- Tones to match leading detector manufacturers

## Identifire Pro Wall Sounder VAD

Allows for compliance with the most recent BRE (Building Research Establishment) best practice guideline for VAD use, colour choice and placement.

Data Sheet



- Combined EN 54-3 and EN54-23 unit
- Wall or Ceiling mounted options
- Red or White lenses
- Flash rate and brightness adjustable



Available VID Lens Colours

## Identifire Pro Ceiling Sounder VAD

A versatile combination sounder/VAD for ceiling use.

Data Sheet



- Flush version low profile
- Available in two lens colours
- Fully approved product for alarm applications

## Identifire Pro Sounder VID

EN, ISO, AUS and Marine approved 32 tone sounder VID for fire, security and general signalling.

Data Sheet



- Flush version low profile
- Available in five lens colours
- Bright beacon provides excellent secondary alarm
- Versatile product for a variety of general signalling applications

## Identifire Pro Wall VAD

With high and low light intensity settings, options for red or white lenses. The Pro VAD provides excellent light coverage.

Data Sheet



- Flush version low profile
- Available in two lens colours
- Red or White lenses
- Flash rate and brightness adjustable



Available VAD Lens Colours

## Identifire Pro Ceiling VAD

An attractive solution for situations requiring approved VADs for ceiling use. Red and white lenses and high and low intensity offers flexibility to system designers.

Data Sheet



- Flush version low profile
- Available in two lens colours
- Red or White lenses
- Flash rate and brightness adjustable



Available VID Lens Colours

## Identifire Pro VID

A versatile series of beacons for a variety of applications such as access control, security, process control and general warning signals.

Data Sheet

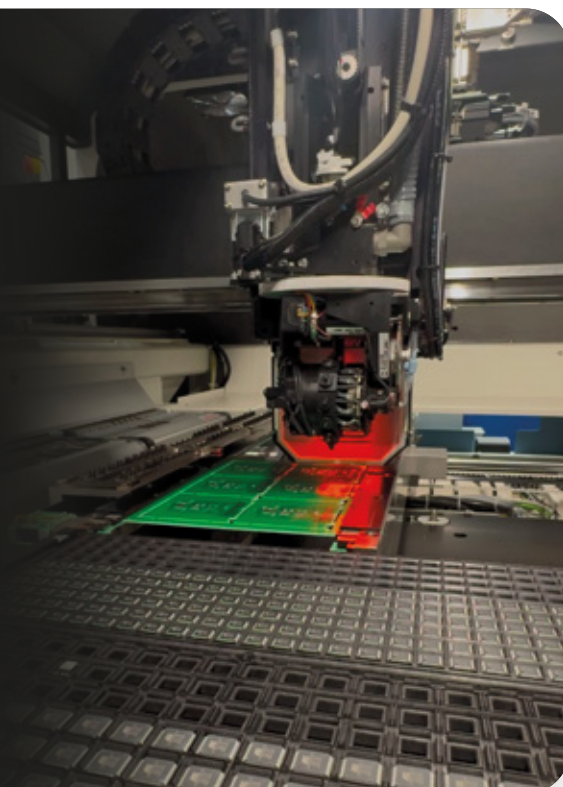


- Flush version low profile
- Available in five lens colours
- Bright beacon provides excellent secondary alarm
- Versatile product for a variety of general signalling applications



## Cross-listing and OEM Options

As a manufacturer, we understand the needs of other manufacturers. We are therefore able to assist with options such as approval cross-listing and 'deep OEM' solutions. We see Identifire Pro, not only excellent in its own right, but also ready to house others' technology and protocols for complete integration into addressable, wireless and other proprietary systems.





# Shaping alarm technology for 30 years

---

Vimpex have been shaping alarm technology for over 30 years. The Identifyfire Pro development is the culmination of that expertise and deep industry knowledge - providing our customers with excellent, high quality products, immediately available with fast delivery times and renowned customer service.

Designed and manufactured by Vimpex in our factory in Essex, UK and available within the EU direct from our subsidiary - Vimpex Europe.







# Identifire Pro product schema



## Example Part Number

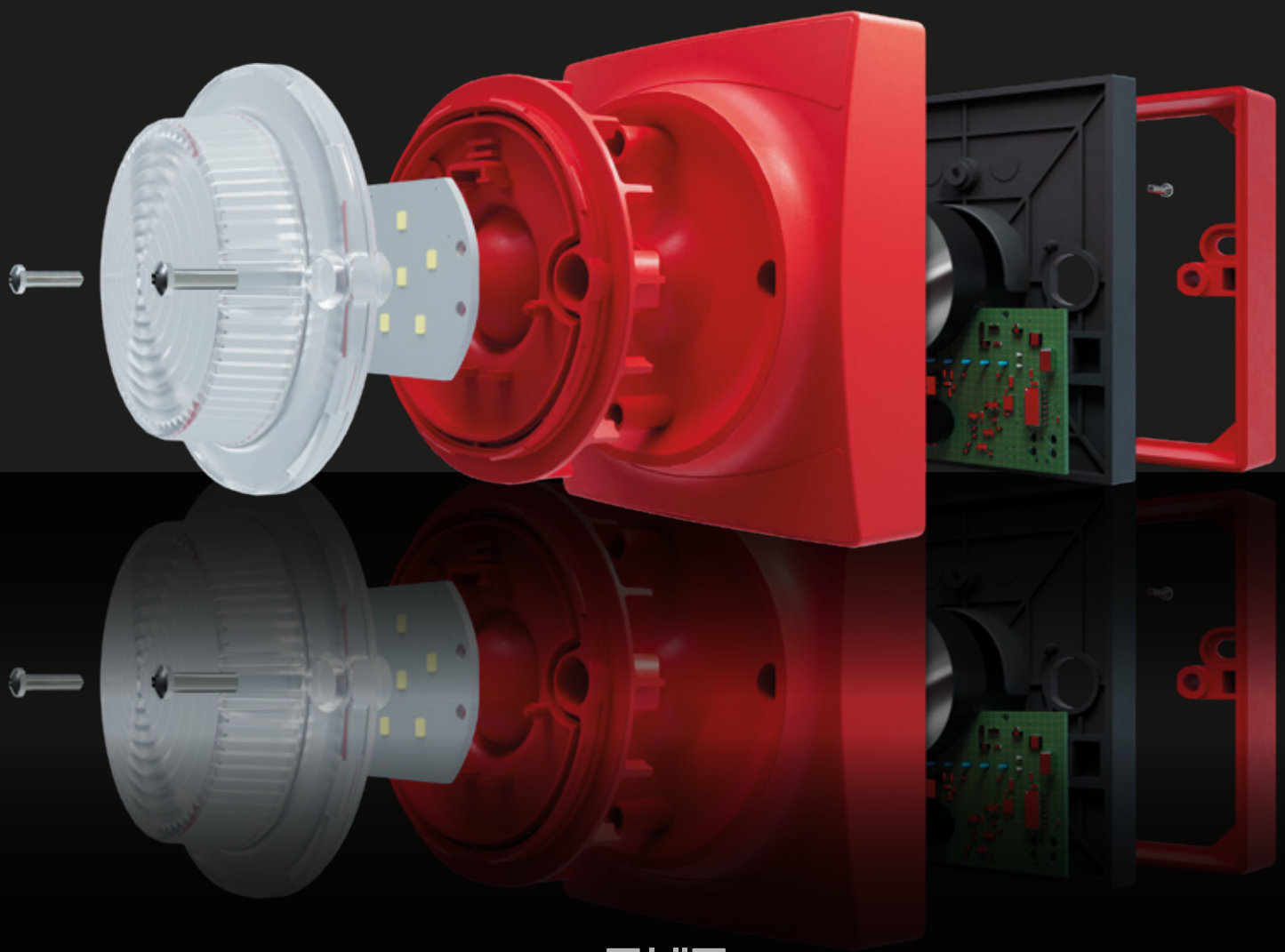
(1) (2) (3) (4) (5) (6) (7)  
11-1610RFR-S

11-1610RFR-S

(Identifire Pro Sounder VID - Printed  
Surface Red with Red Lens - Single)

Range (1)	11 - Identifire Pro (Europe)	
Product (2)	13 - VID 14 - VAD Wall 15 - Sounder 16 - Sounder VID	17 - Sounder VAD Wall 31 - Sounder VAD Ceiling 32 - VAD Ceiling
Text (3)	10 - Printed with Identifire Logo 18 - No Wording, No Logo	
Body Colour (4)	R - Red W - White	G - Grey
Enclosure (5)	F - Flush S - Surface	W - Weatherproof P - Pattress
Light Output (6)	R - Red W - White A - Amber	G - Green B - Blue
Pack (7)	S - Single	

IDENTIFIRE|PRO



THE FIRST OF A GENERATION



BR/371003\_REV0100

### Vimpex Ltd.

Star Lane, Great Wakering,  
Essex SS3 0PJ, UK

t: +44 (0) 1702 216999

e: [sales@vimpex.co.uk](mailto:sales@vimpex.co.uk)

[www.vimpex.co.uk](http://www.vimpex.co.uk)

### Vimpex Sweden AB

Mekanikervägen 6, 564 35  
Bankeryd, Sweden

t: +46 (0) 4672 7331065

e: [sales@vimpex.se](mailto:sales@vimpex.se)

[www.vimpex.se](http://www.vimpex.se)