

MINI PRO - STORED PRESSURE

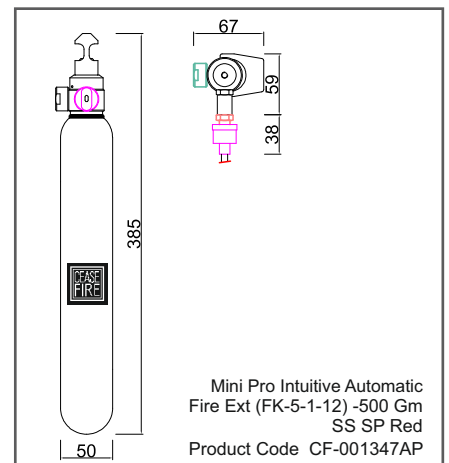
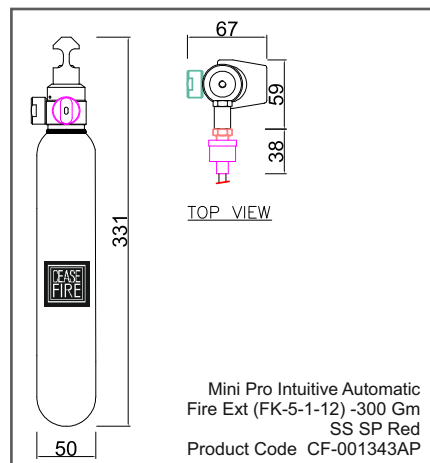
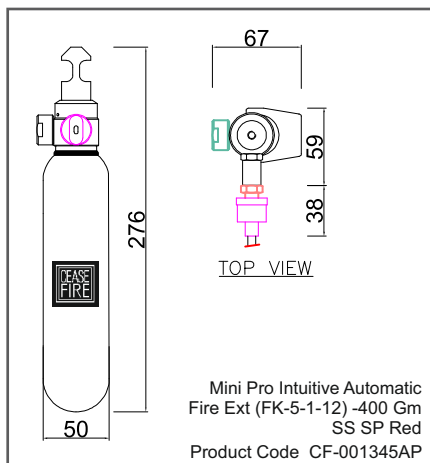
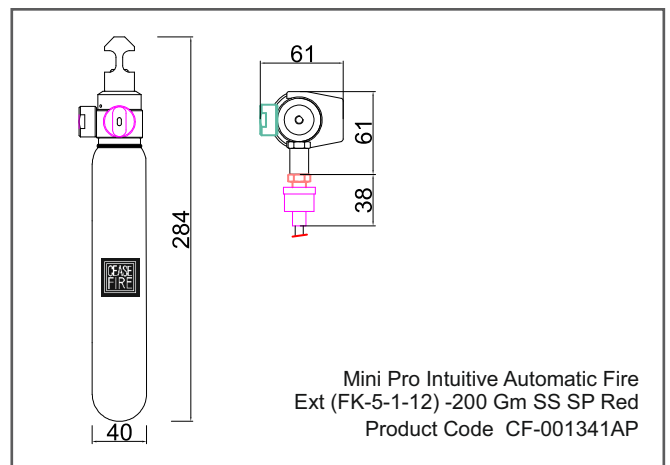
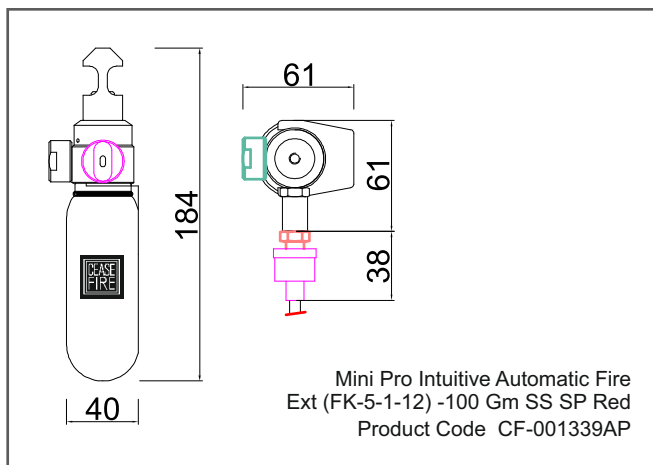
INTUITIVE (PRODUCT OVERVIEW)

Small in size but not in might. Being the smallest suppression system - Mini has enough might to fire secure small enclosed spaces. Ceasefire Mini-Intuitive System being a direct suppression system protects the enclosed micro-environment from inside. As soon as it is mounted on the inner wall of the micro-environment, the Mini is instantly ready to safeguard. Mini being fully automatic can detect, actuate, and suppress fires without any form of human intervention. At the same time, it is available in Fluroketone which happens to be a cold gas, therefore, extinguishes fire by absorbing heat from it. After being sprayed it leaves behind no residue and works on class A, B, C, and Electrically started fires.

The clean agent based variant does not fall under the ambit of the F-Gas Regulations



ENGINEERING DRAWINGS





TECHNICAL SPECIFICATIONS

Product Code	UOM	CF-001339AP 	CF-001341AP 	CF-001343AP 	CF-001345AP 	CF-001347AP
		CF-001339B 	CF-001341B 	CF-001343B 	CF-001345B 	CF-001347B
		CF-001339D 	CF-001341D 	CF-001343D 	CF-001345D 	CF-001347D
		CF-001339C 	CF-001341C 	CF-001343C 	CF-001345C 	CF-001347C
		CF-001339E 	CF-001341E 	CF-001343E 	CF-001345E 	CF-001347E
Description	—	Mini Pro Intuitive Automatic Fire Ext (FK-5-1-12) -100 Gm SS SP Red	Mini Pro Intuitive Automatic Fire Ext (FK-5-1-12) - 200 Gm SS SP Red	Mini Pro Intuitive Automatic Fire Ext (FK-5-1-12) -300 Gm SS SP Red	Mini Pro Intuitive Automatic Fire Ext (FK-5-1-12) -400 Gm SS SP Red	Mini Pro Intuitive Automatic Fire Ext (FK-5-1-12) -500 Gm SS SP Red
Capacity of Agent	Grms	100	200	300	400	500
Certification	—	PED UKCA-PED BSI TESTED*	PED UKCA-PED BSI TESTED*	PED UKCA-PED BSI TESTED*	PED UKCA-PED BSI TESTED*	PED UKCA-PED BSI TESTED*
Diameter of Shell	mm	40	40	50	50	50
Total Height (approx.)	mm	184	284	276	331	385
MOC of Shell	—	SS 316L (1.4435)	SS 316L (1.4435)	SS 316L (1.4435)	SS 316L (1.4435)	SS 316L (1.4435)
Mini. Wall Thickness	mm	1.2	1.2	1.2	1.2	1.2
Test Pressure	Bar	35	35	35	35	35
Anti-Corrosive Treatment	—	Outer surfaces EP Powder coated having Min. Thickness 50 Micron Shade Color Red	Outer surfaces EP Powder coated having Min. Thickness 50 Micron Shade Color Red	Outer surfaces EP Powder coated having Min. Thickness 50 Micron Shade Color Red	Outer surfaces EP Powder coated having Min. Thickness 50 Micron Shade Color Red	Outer surfaces EP Powder coated having Min. Thickness 50 Micron Shade Color Red
Service Pressure	Bar	10	10	10	10	10
Type of Operating Mechanism	—	Automatic	Automatic	Automatic	Automatic	Automatic



TECHNICAL SPECIFICATIONS

Product Code	UOM	CF-001339AP 	CF-001341AP 	CF-001343AP 	CF-001345AP 	CF-001347AP 
		CF-001339B 	CF-001341B 	CF-001343B 	CF-001345B 	CF-001347B 
		CF-001339D 	CF-001341D 	CF-001343D 	CF-001345D 	CF-001347D 
		CF-001339C 	CF-001341C 	CF-001343C 	CF-001345C 	CF-001347C 
		CF-001339E 	CF-001341E 	CF-001343E 	CF-001345E 	CF-001347E 
Type of Pressure Gauge	—	Magnetic Bourdon Tube Type	Magnetic Bourdon Tube Type	Magnetic Bourdon Tube Type	Magnetic Bourdon Tube Type	Magnetic Bourdon Tube Type
Type of Discharge Fitting	mm	Direct nozzle with Quartzoid Bulb	Direct nozzle with Quartzoid Bulb	Direct nozzle with Quartzoid Bulb	Direct nozzle with Quartzoid Bulb	Direct nozzle with Quartzoid Bulb
Concentration (V/wt.)	%	4.7	4.7	4.7	4.7	4.7
Coverage Volume	m ³	0.130	0.260	0.290	0.520	0.650
Min. Discharge Time	Sec.	1 to 3	1 to 3	1 to 3	1 to 3	1 to 3
Operating Temperature Range(approx.)	°C	-20 to 60	-20 to 60	-20 to 60	-20 to 60	-20 to 60
Actuation Temperature**	°C	57°	57°	57°	57°	57°
Applicable to Type of Fire	—	A, B, C ,& Electrical Started Fire	A, B, C ,& Electrical Started Fire	A, B, C ,& Electrical Started Fire	A, B, C ,& Electrical Started Fire	A, B, C ,& Electrical Started Fire
Filled Weight Range (approx.)***	Kg	0.665	0.90	1.10	1.25	1.4
Packed Weight Range (approx.)****	Kg	0.95	1.2	1.38	1.6	1.74
Packed Size Length x Width x Height	mm	75 x 75 x 205	75 x 75 x 305	75 x 80 x 395	75 x 80 x 355	75 x 80 x 405



TECHNICAL SPECIFICATIONS

Product Code	UOM	CF-001339AP	CF-001341AP	CF-001343AP	CF-001345AP	CF-001347AP
		CF-001339B	CF-001341B	CF-001343B	CF-001345B	CF-001347B
		CF-001339D	CF-001341D	CF-001343D	CF-001345D	CF-001347D
		CF-001339C	CF-001341C	CF-001343C	CF-001345C	CF-001347C
		CF-001339E	CF-001341E	CF-001343E	CF-001345E	CF-001347E
Product Warranty	Year	5	5	5	5	5

Transportation Bracket

MOC	—	Black Powder Coated Ms	Black Powder Coated Ms	Black Powder Coated Ms	Black Powder Coated Ms	Black Powder Coated Ms
Dimension H*W*D	mm	104 x 77 x 57	177 x 77 x 57	170 x 87 x 67	225 x 87 x 67	282 x 87 x 67

*Mini tested for it fire fighting capabilities by BSI.

**Quartzoid bulb in other temperature setting as below is available on request and would be dependent on MOQ for your region.

Please check the availability and delivery time before ordering.

***It includes Empty Extinguisher, Contents and Plastic Base only (where applicable) - not including hose, Wall bracket or Packaging.

****Includes all packaging, hose / horn and bracket.

QUARTZOID BULB KEY

57°C / 135°F	68°C / 155°F	79°C / 174°F	93°C / 200°F	141°C / 286°F
182°C / 360°F	227°C / 440°F			

CERTIFICATIONS



PRODUCT PICTURES



100 GM



200 GM



300 GM



400 GM



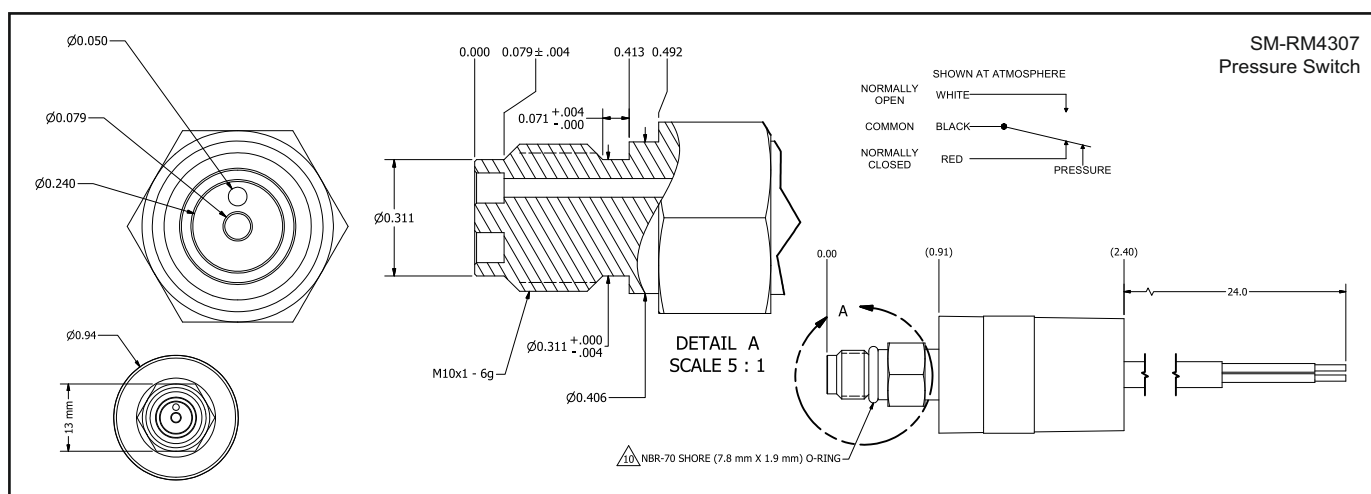
500 GM

UL & CE CERTIFIED PRESSURE SWITCH (OPTIONAL)

The presence of pressure switch marks the extinguishing units monitorable in nature so the user can always check the system's readiness. The device's role is to convert a mechanical action into an electrical impulse for the control panel to read.



ENGINEERING DRAWINGS



TECHNICAL SPECIFICATIONS

Product Code	SM-RM4307
Description	Pressure Switch SPDT (Switch Point 5Bar / 72.5 PSIG decreasing) NC & NO -Imp
Increasing Activation	130 PSIG \pm 9 PSIG [9 BAR]
Decreasing Activation	72.5 PSIG \pm 7 PSIG [5 BAR]
Max Pressure	290 PSIG
Connector	NONE.
Fitting	M10 WITH DEFLATOR.
Fitting Material	BRASS.
Body Material	PLASTIC
Electrical Rating	3A 240 VAC/28 VDC.
Wire Jacket/insulator Material	PVC
O-ring Provided With Switch	NBR-70 SHORE (7.8X1.9 mm)
Certification	UL, RoHS, CE

*v2' Published Date is 23-01-2025.

**Regular R&D and product improvisations may lead to change in product specifications in this data sheet, without any prior notice.

CEASEFIRE INDUSTRIES UK LIMITED

Call us at: 0-113-868-6666, 0-126-891-9999

www.ceasefire.co.uk